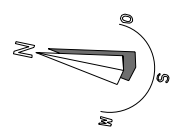
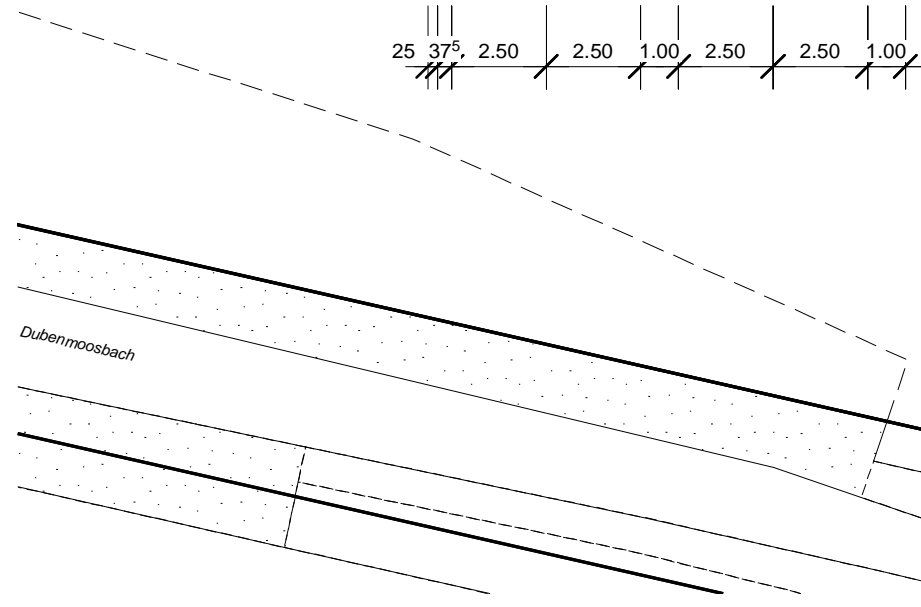
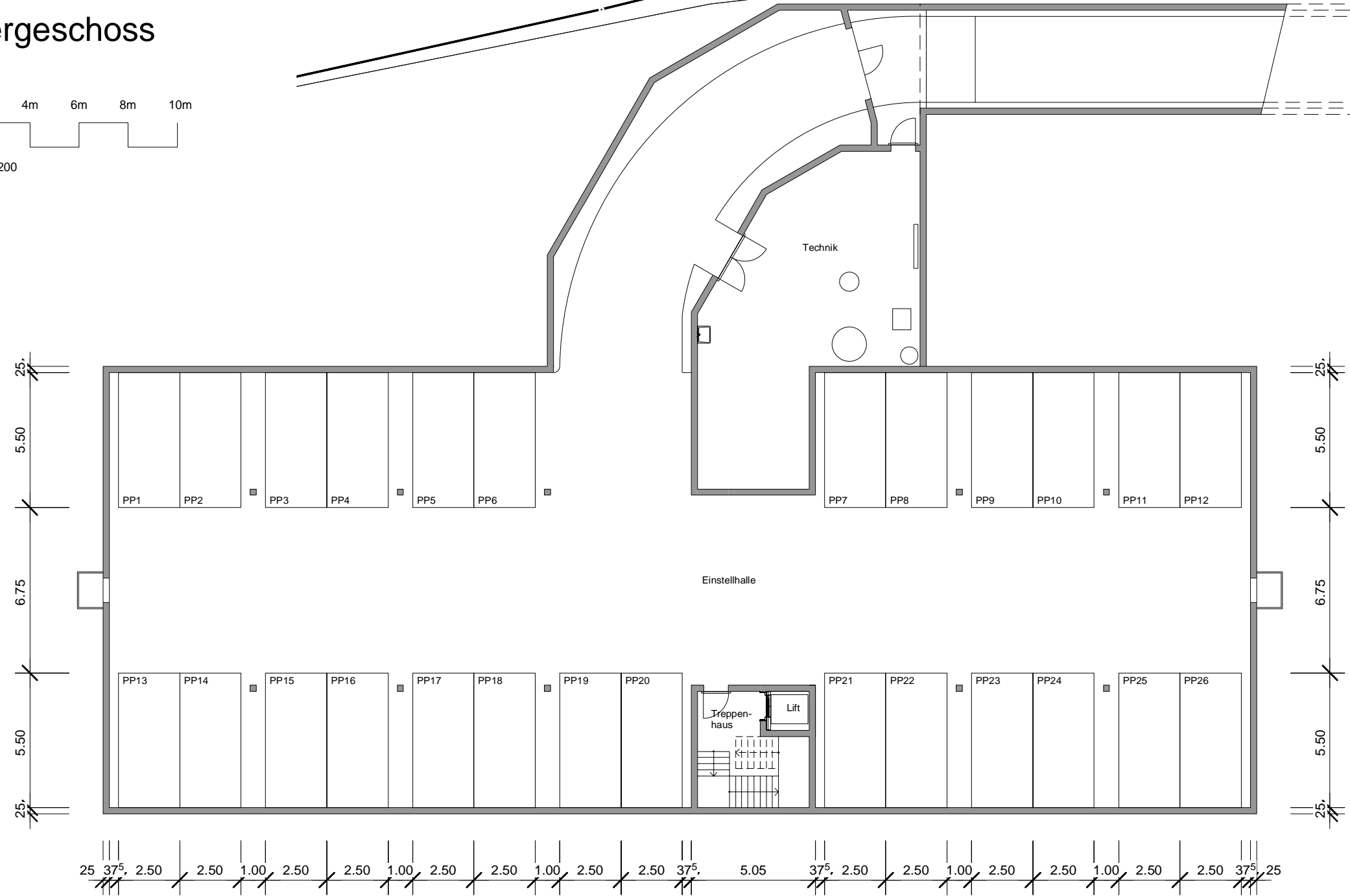
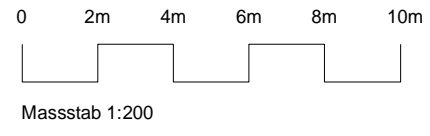


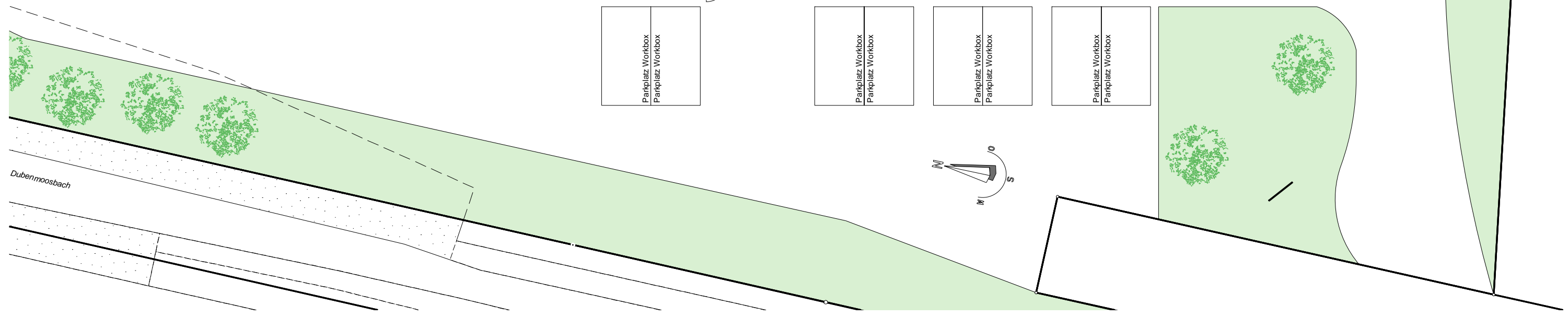
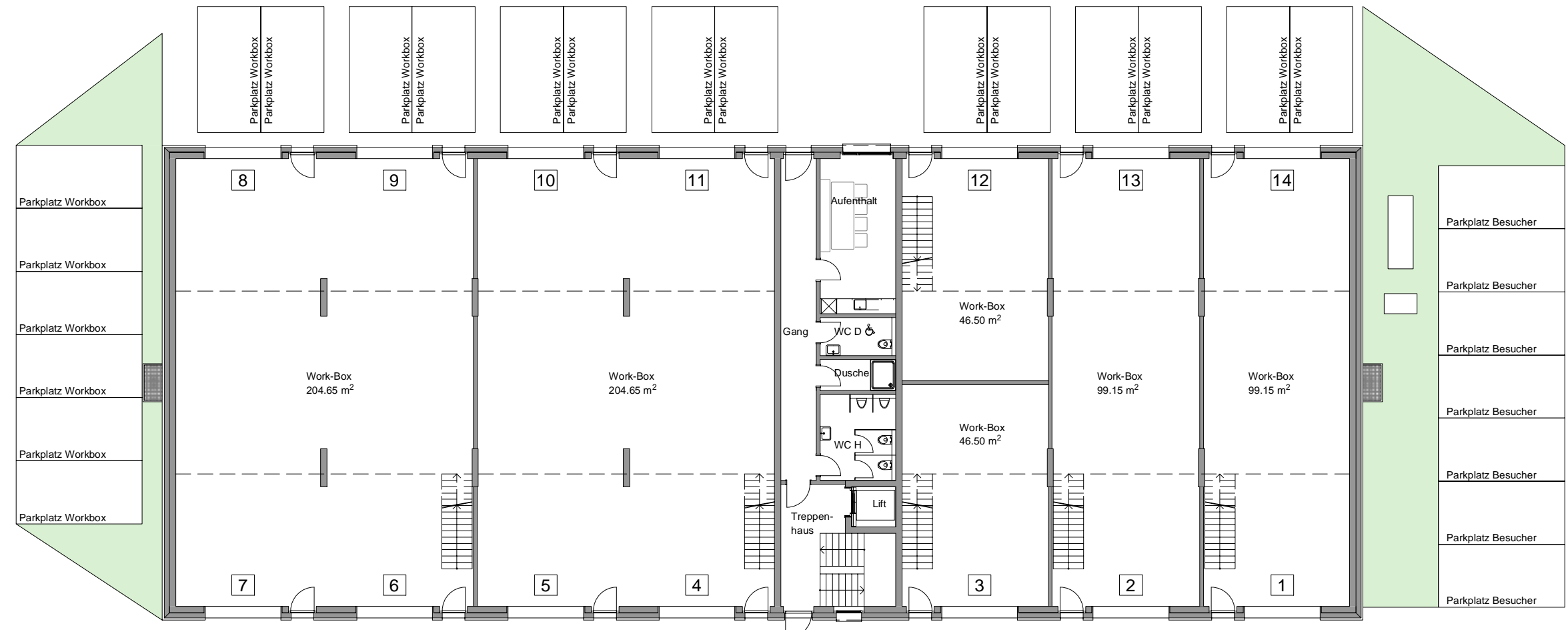
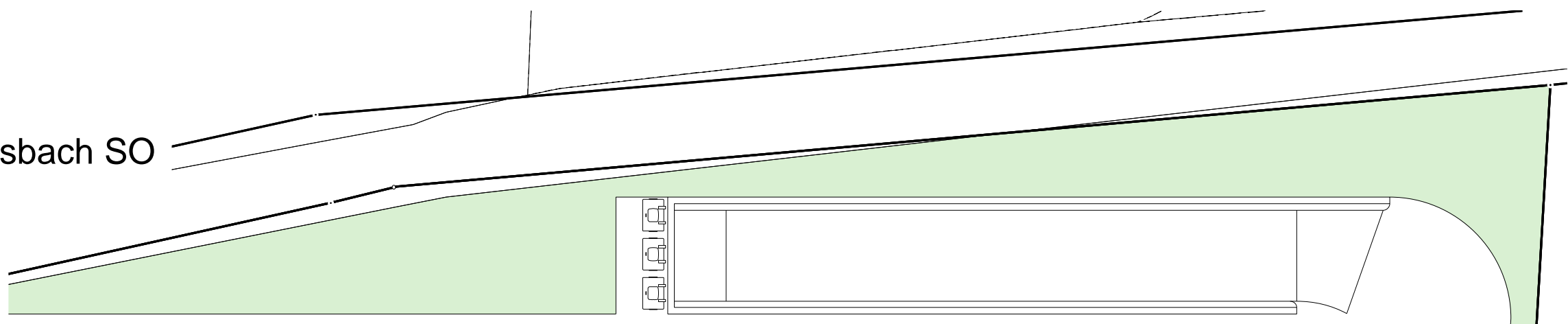
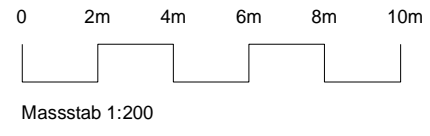
Neubau Industriehalle
Parzelle 392, 5015 Erlinsbach SO

Untergeschoss



Neubau Industriehalle Parzelle 392, 5015 Erlinsbach SO

Erdgeschoss



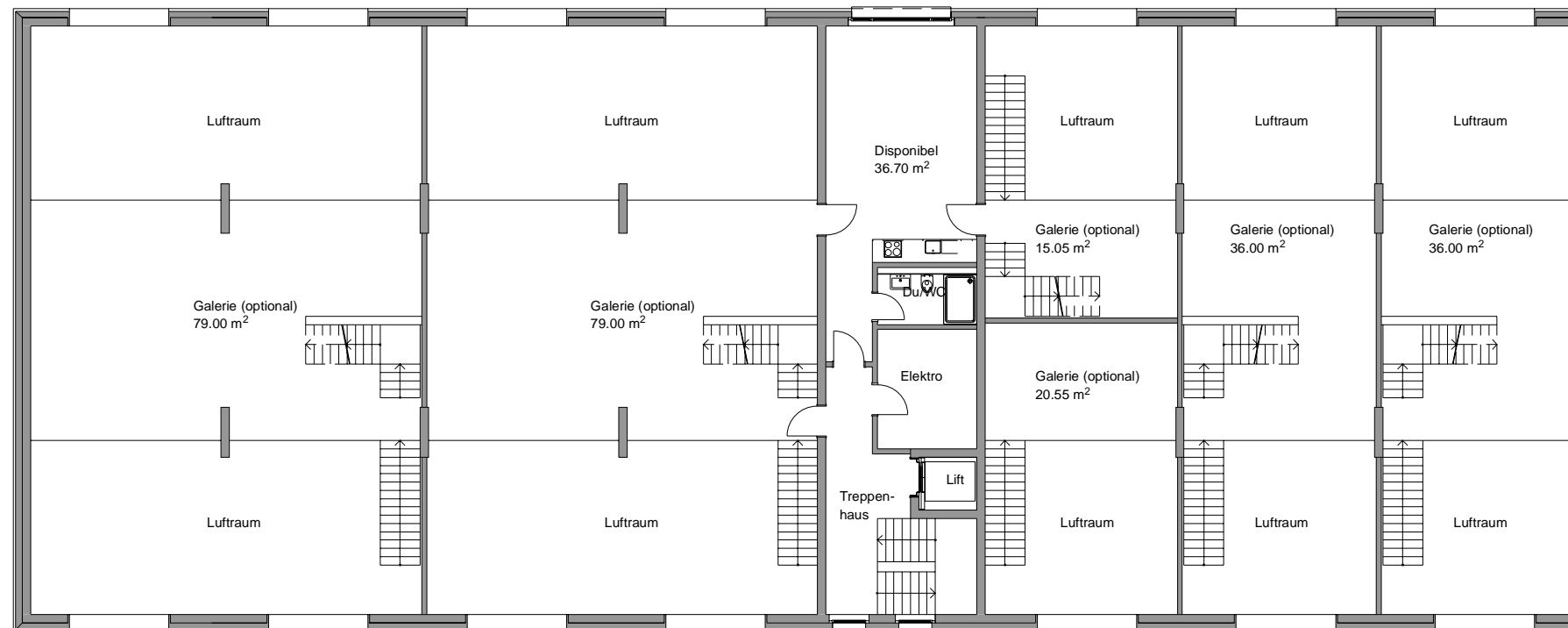
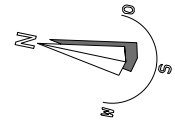
Neubau Industriehalle Parzelle 392, 5015 Erlinsbach SO

1. Obergeschoss

0 2m 4m 6m 8m 10m

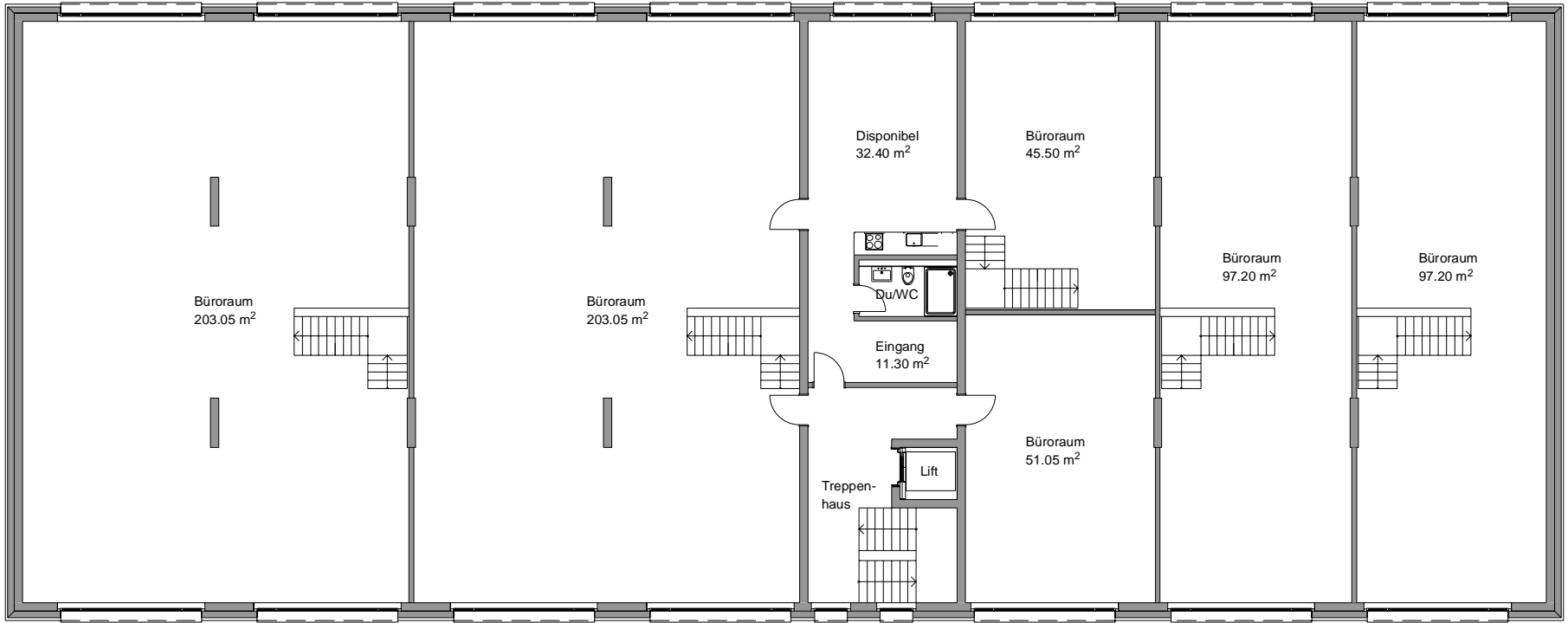
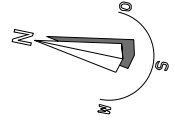
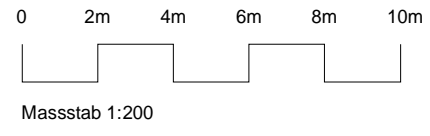


Massstab 1:200



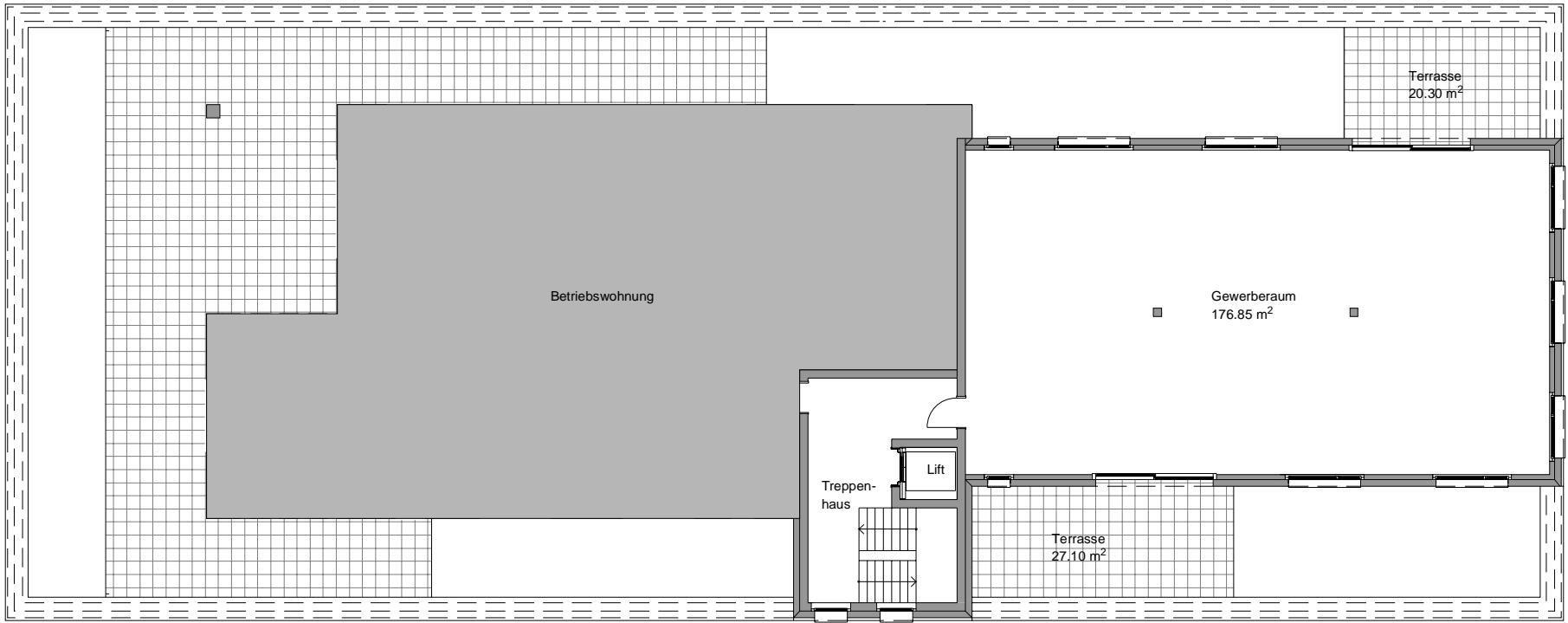
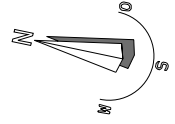
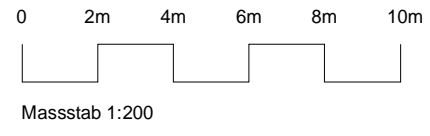
Neubau Industriehalle Parzelle 392, 5015 Erlinsbach SO

2. Obergeschoss



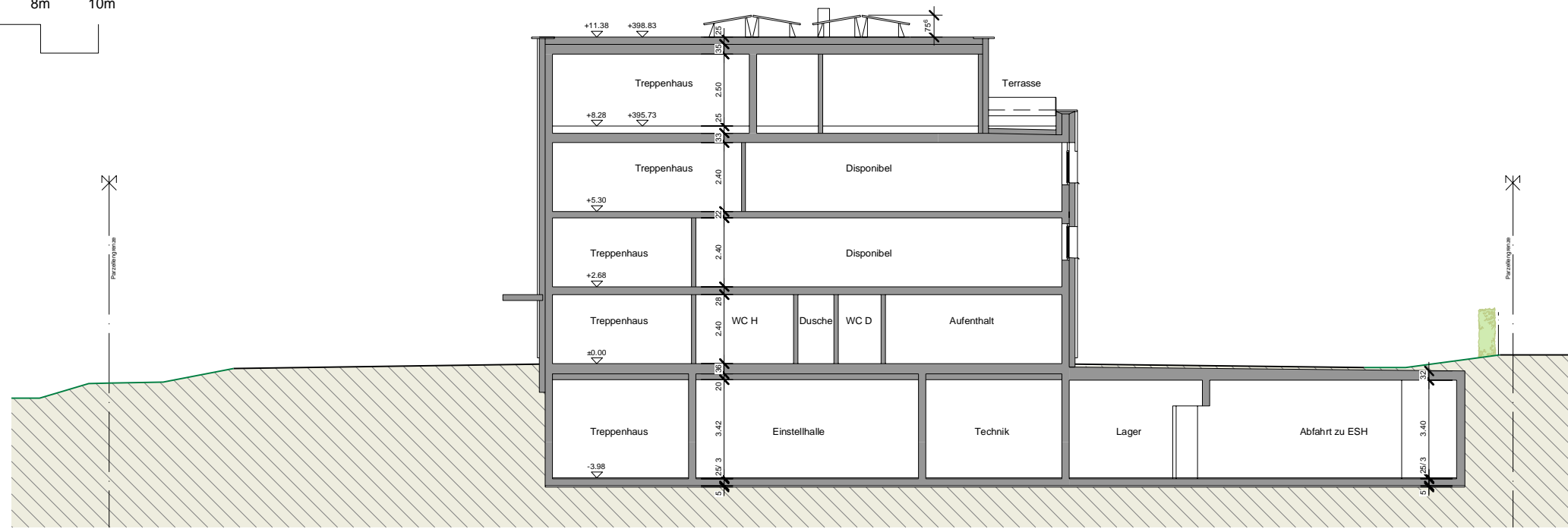
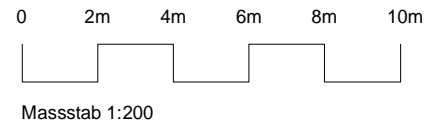
Neubau Industriehalle
Parzelle 392, 5015 Erlinsbach SO

3. Obergeschoss

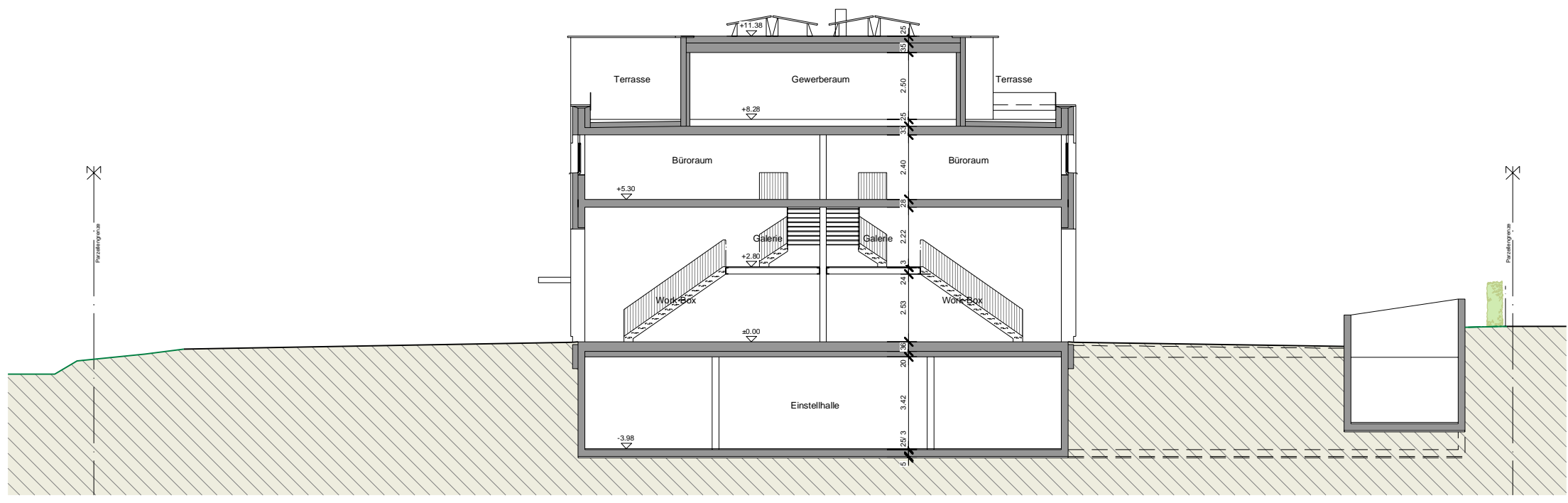


Neubau Industriehalle Parzelle 392, 5015 Erlinsbach SO

Schnitte



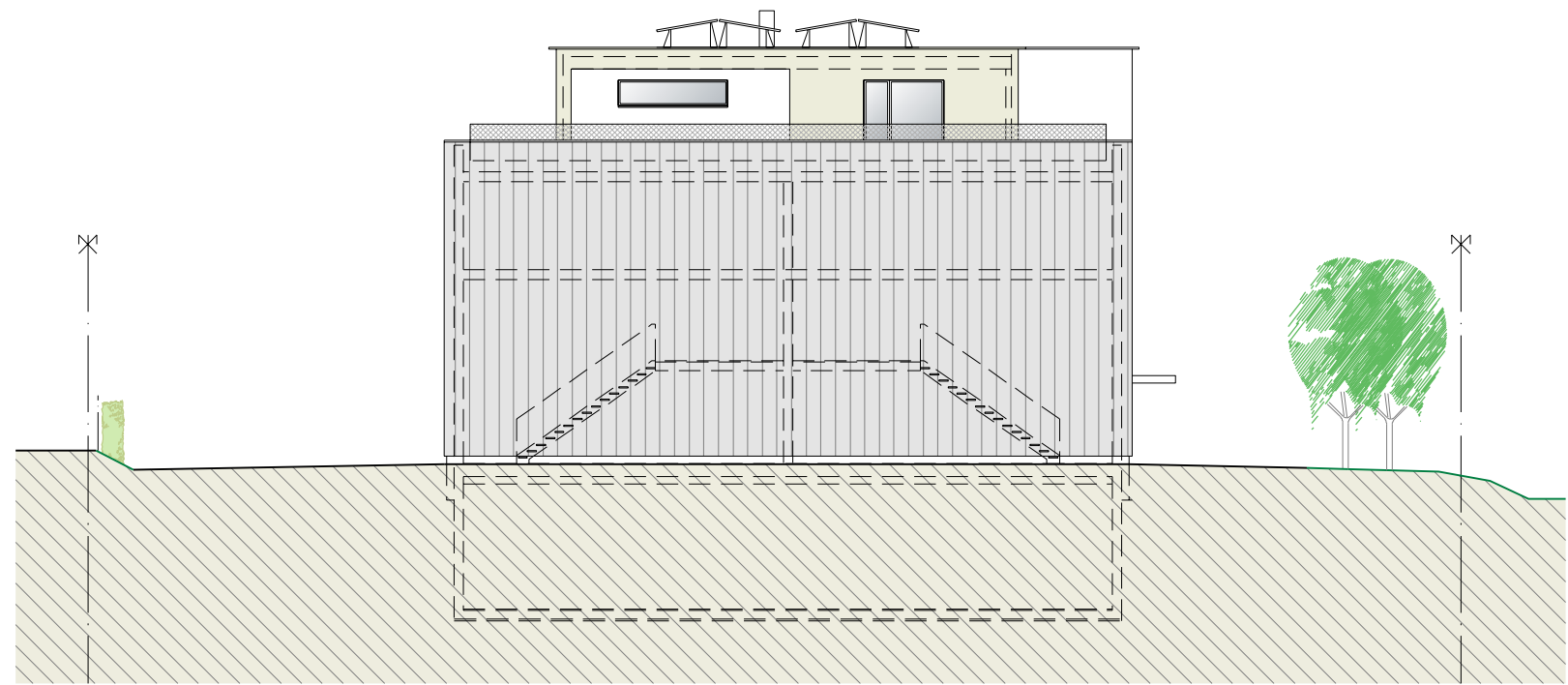
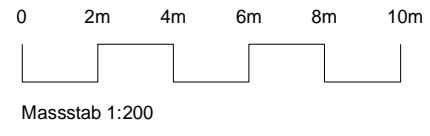
Schnitt bei Treppenhaus



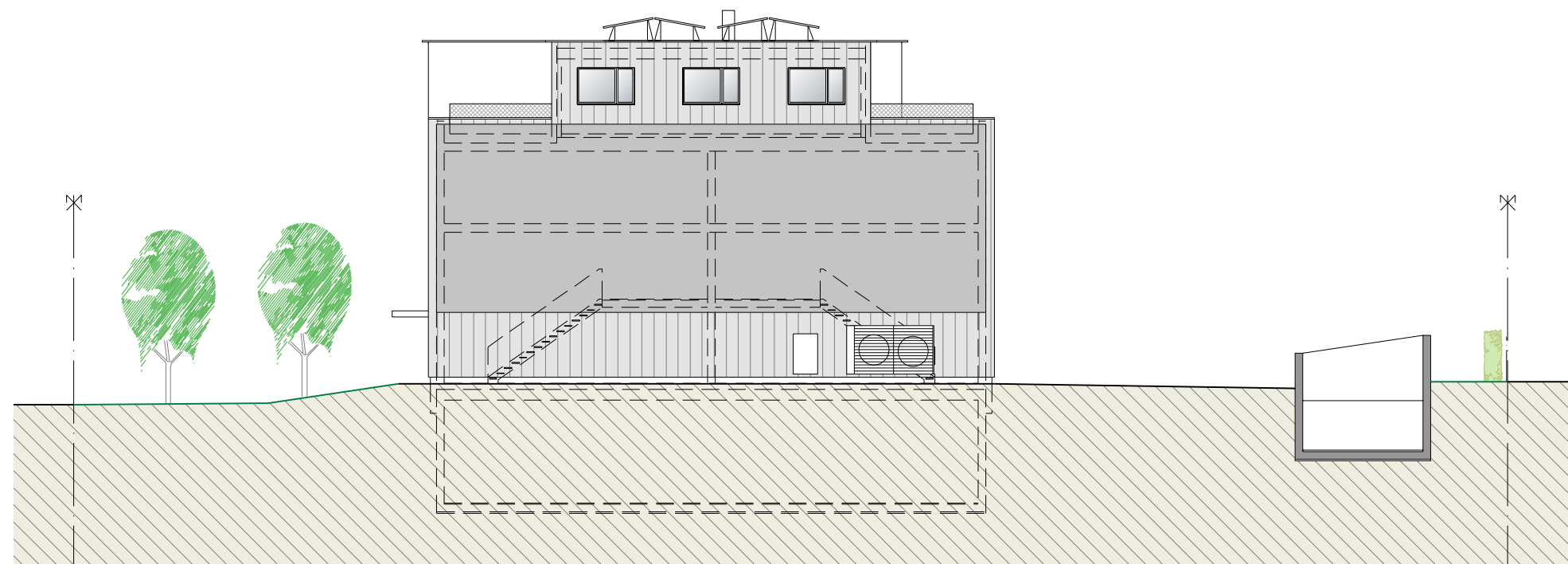
Schnitt bei Work-Boxen

Neubau Industriehalle
Parzelle 392, 5015 Erlinsbach SO

Nord- + Südfassade

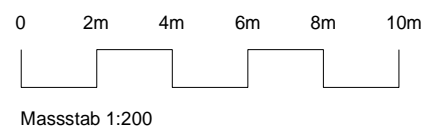


Nordfassade

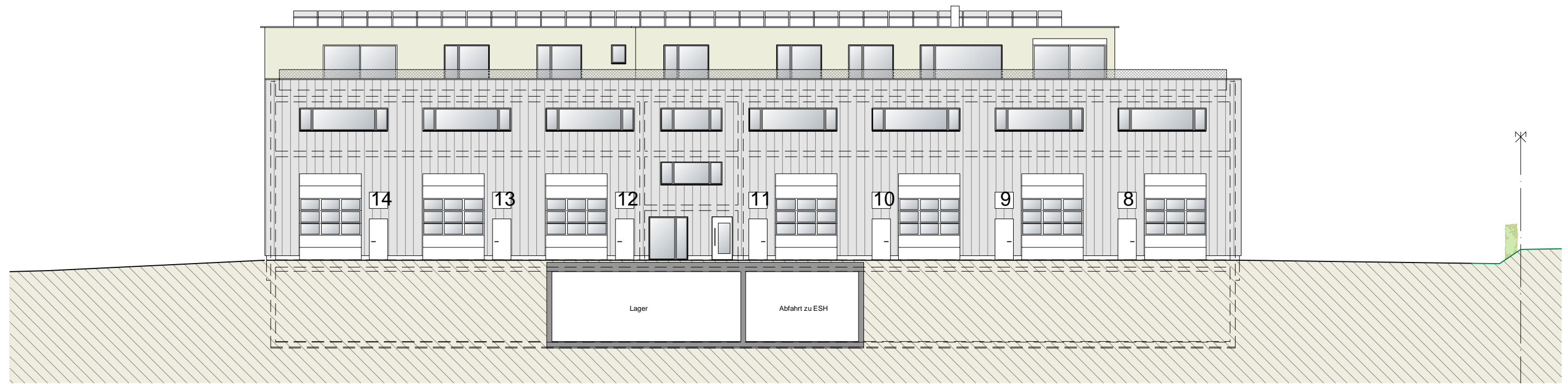


Südfassade

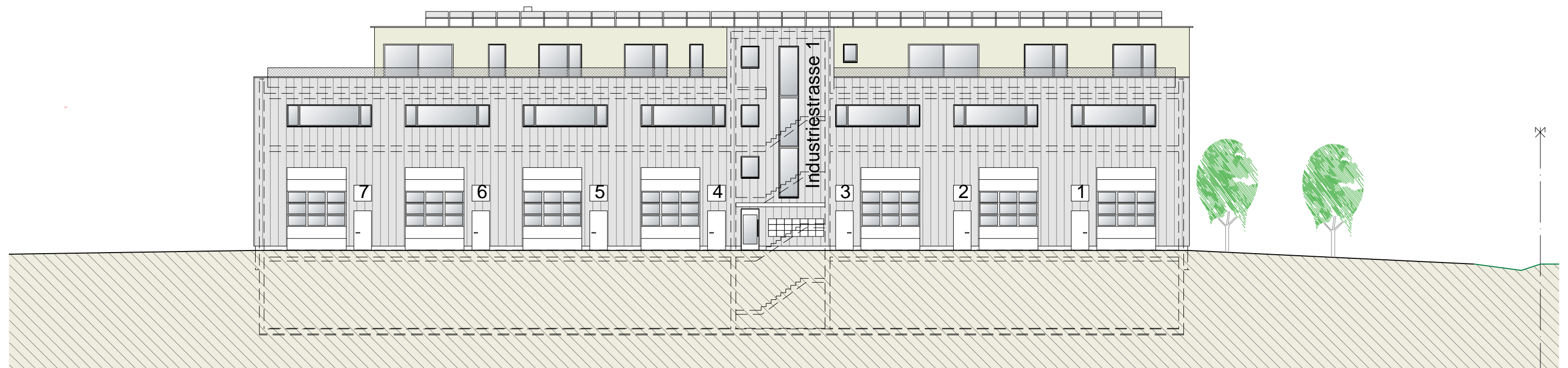
Neubau Industriehalle
Parzelle 392, 5015 Erlinsbach SO



Ost- + Westfassade



Ostfassade



Westfassade